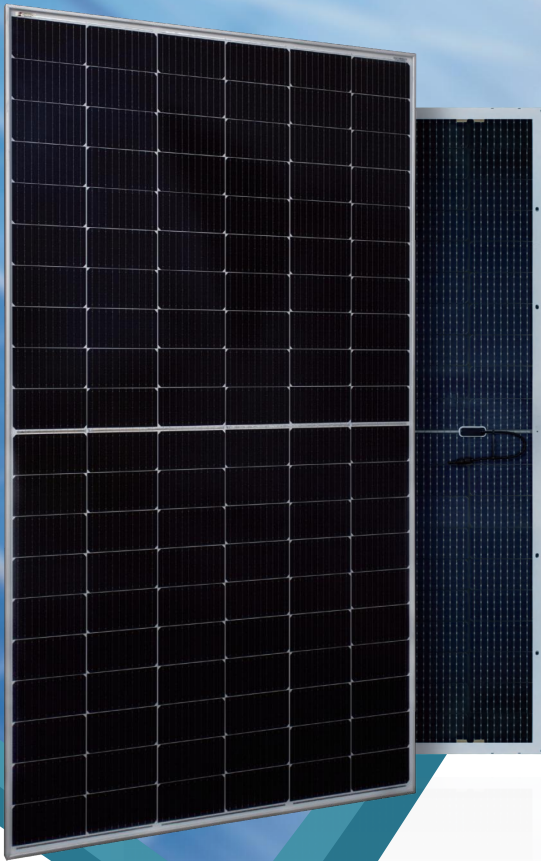




SpolarPV
Easy Invest, More Returns



21.75 %

Module efficiency

615 W

Highest power output



Product warranty



Linear power warranty

SPV615-PG12-120BD

590-615Watt



High Efficiency

Higher power conversion efficiency benefited from advanced Passivated Emitter and Rear Cell (PERC) technology.



Anti-reflection

Less than 20% reflectivity with minimum glare.



Good Mechanical Load Performance

Certified to withstand: wind load (2400 Pa), snow load and hail strike(5400 Pa) .



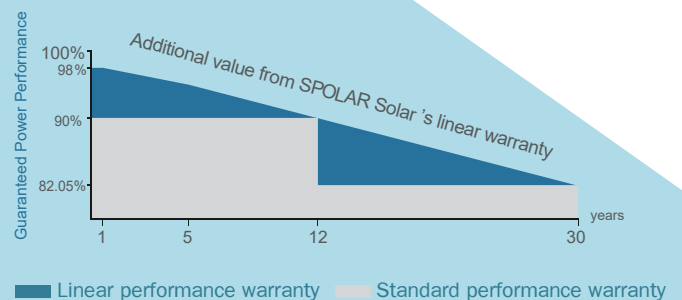
Low Light Performance Resilience

Advanced glass and cell surface texture designs ensure excellent performance in low light environment.



Durability Against Extreme Environmental Conditions

Good performance of Anti-PID, Ammonia and Salt mist certified by 2 PfG 2387/01.18, IEC61716 and IEC61701.



ISO9001:2016 ISO14001:2016
OHSAS18001:2011 certified factory.
IEC61215 IEC61730 certified products.

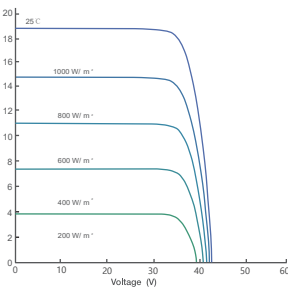
Electrical Characteristics at Standard Test Conditions (STC)

Module Type	SPV590-PG12-120BD	SPV595-PG12-120BD	SPV600-PG12-120BD	SPV605-PG12-120BD	SPV610-PG12-120BD	SPV615-PG12-120BD
Maximum Power - Pmax (W)	590	595	600	605	610	615
Maximum Power Voltage - Vmp (V)	34.00	34.19	34.41	34.59	34.84	35.02
Maximum Power Current - Imp (A)	17.36	17.41	17.45	17.49	17.51	17.56
Open-circuit Voltage - Voc (V)	41.10	41.30	41.50	41.70	41.90	42.45
Short-circuit Current - Isc (A)	18.42	18.47	18.52	18.57	18.66	18.72
Module Efficiency STC (%)	20.87 %	21.05 %	21.23 %	21.40 %	21.58 %	21.75 %

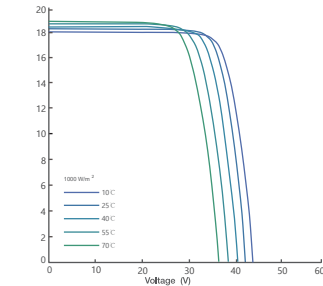
Electrical Characteristics at Normal Operating Cell Temperature (NOCT)

Module Type	SPV590-PG12-120BD	SPV595-PG12-120BD	SPV600-PG12-120BD	SPV605-PG12-120BD	SPV610-PG12-120BD	SPV615-PG12-120BD
Maximum Power - Pmax (W)	444	448	452	456	460	464
Maximum Power Voltage - Vmp (V)	32.00	32.30	32.41	32.64	32.83	33.00
Maximum Power Current - Imp (A)	13.89	13.93	13.94	13.97	14.01	14.06
Open-circuit Voltage - Voc (V)	38.31	38.49	38.72	38.99	39.75	40.00
Short-circuit Current - Isc (A)	14.74	14.79	14.80	14.85	14.88	14.99
Power Tolerance	0 ~ +3W		Operating Temperature (°C)		-40 °C ~ +85 °C	
Temperature Coefficients of Pmax	-0.35% / °C		Maximum System Voltage		1500 V	
Temperature Coefficients of Voc	-0.275% / °C		Maximum Series Fuse Rating		30 A	
Temperature Coefficients of Isc	0.045% / °C		Nominal Operating Cell Temperature		45 ± 2 °C	

Current-Voltage Curve under different irradiance

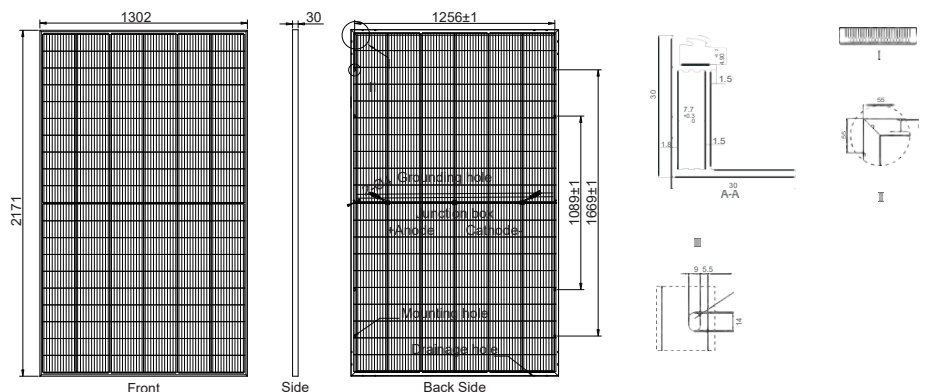


Current-Voltage Curve under different working temperatures



Mechanical Characteristics

Cell Type	Mono-crystalline PERC 210x105 mm
No. of Cells	120 (6x20)
Dimensions	2171x1302x30 mm
Weight	35.0 kg
Glass	Dual Glass 2.0mm Heat Strengthened Glass
Frame	Anodized Aluminium Alloy
Junction Box	IP68, MC4 Compatible, 3 Bypass Diode
Output Cables	1x4.0 mm ² , Length: 300 mm or Customized Length
Packaging Configuration	36pcs/pallet, 648pcs/40'HQContainer



www.spolarpv.com